

SAW Resonator 850 MHz

MODEL NO.: TC0634A

REV. NO.: 2.0

A. FEATURES:

1. One-Port Resonator.

B. MAXIMUM RATING:

1. Input Power Level: 0 dBm
2. DC voltage: 3 V
3. Operating Temperature: -40°C to +85°C
4. Storage Temperature: -40°C to +85°C
5. Moisture Sensitive Level: Level 1 (MSL1)

RoHS Compliant
Lead free
Lead-free soldering

Electrostatic Sensitive Device (ESD)

C. ELECTRICAL CHARACTERISTICS:

Characteristic	Units	Minimum	Typical	Maximum
Center frequency Fr	MHz	849.80	850	850.20
Insertion Loss IL	dB	-	1.45	2.0
Equivalent Elements				
Motional capacitance C1	fF	-	1.39	-
Motional inductance L1	μH	-	25.1	-
Motional resistance R1	Ohm	-	13.6	-
Parallel capacitance Co	pF	-	2.62	-
Temp.coeff.	ppm/c*2	-	0.032	-
Turnover To	deg.C	-	25	-
Package size		SMD 3.0X3.0X1.4mm		

Temperature dependence of f_c : $f_c(T_A) = f_c(T_O)(1 + TC_f(T_A - T_O)^2)$

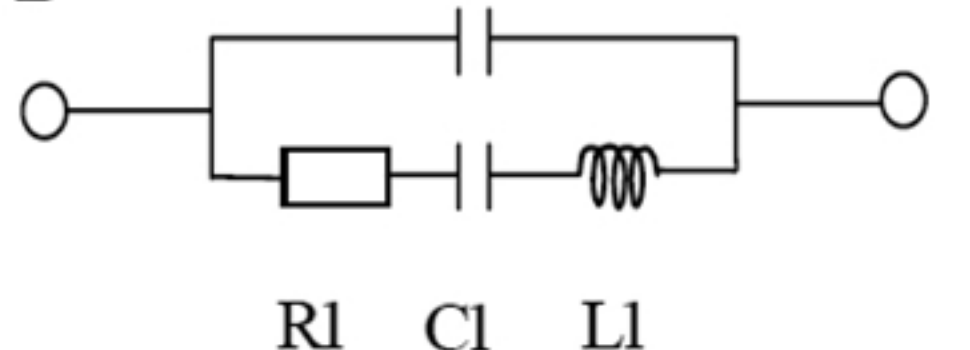
D. EQUIVALENT CIRCUIT:

One-Port Resonator:

Source Impedance

50Ω

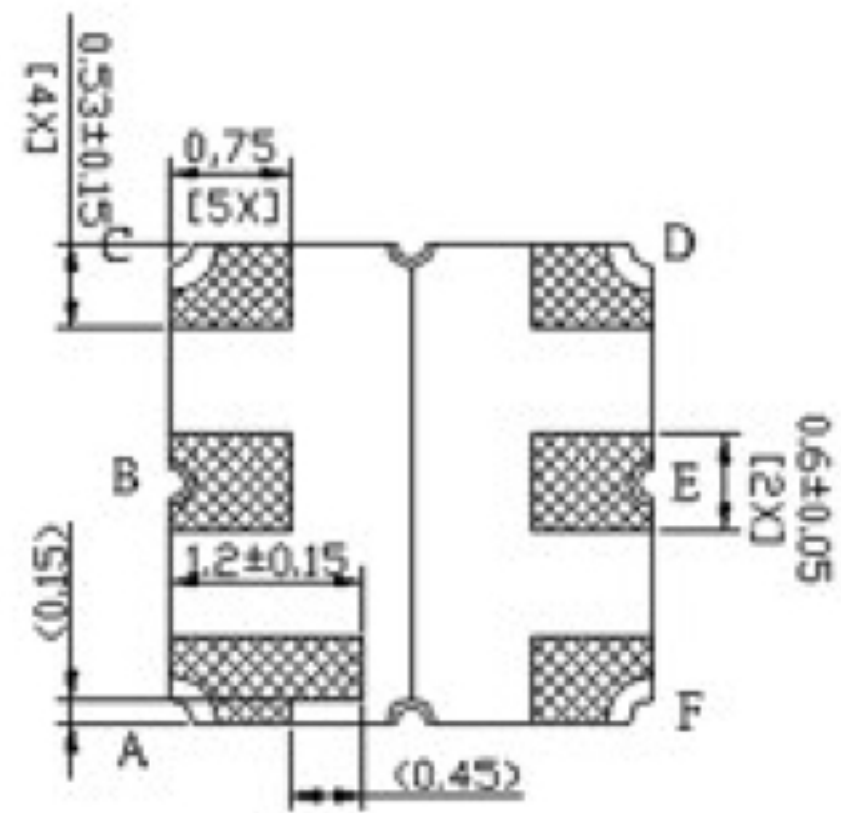
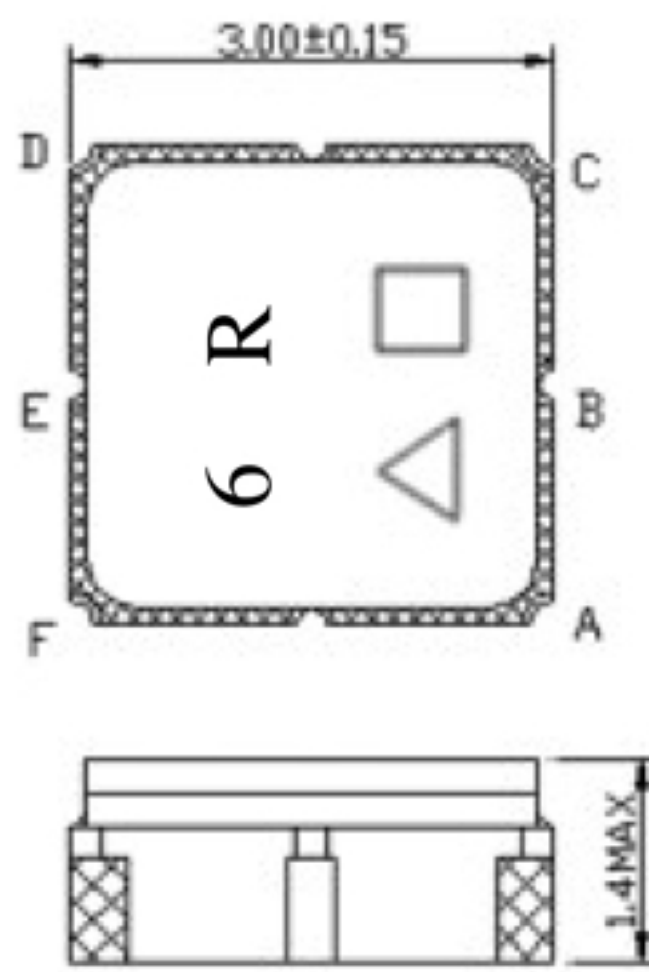
#B



Load Impedance

50Ω

E.OUTLINE DRAWING:



Pin B: Input or Output ; Pin E: Output or Input
 Pin A,C,D,F:Ground
 △ : Year Code
 □ : Date Code
 Unit : mm

□ Date code :

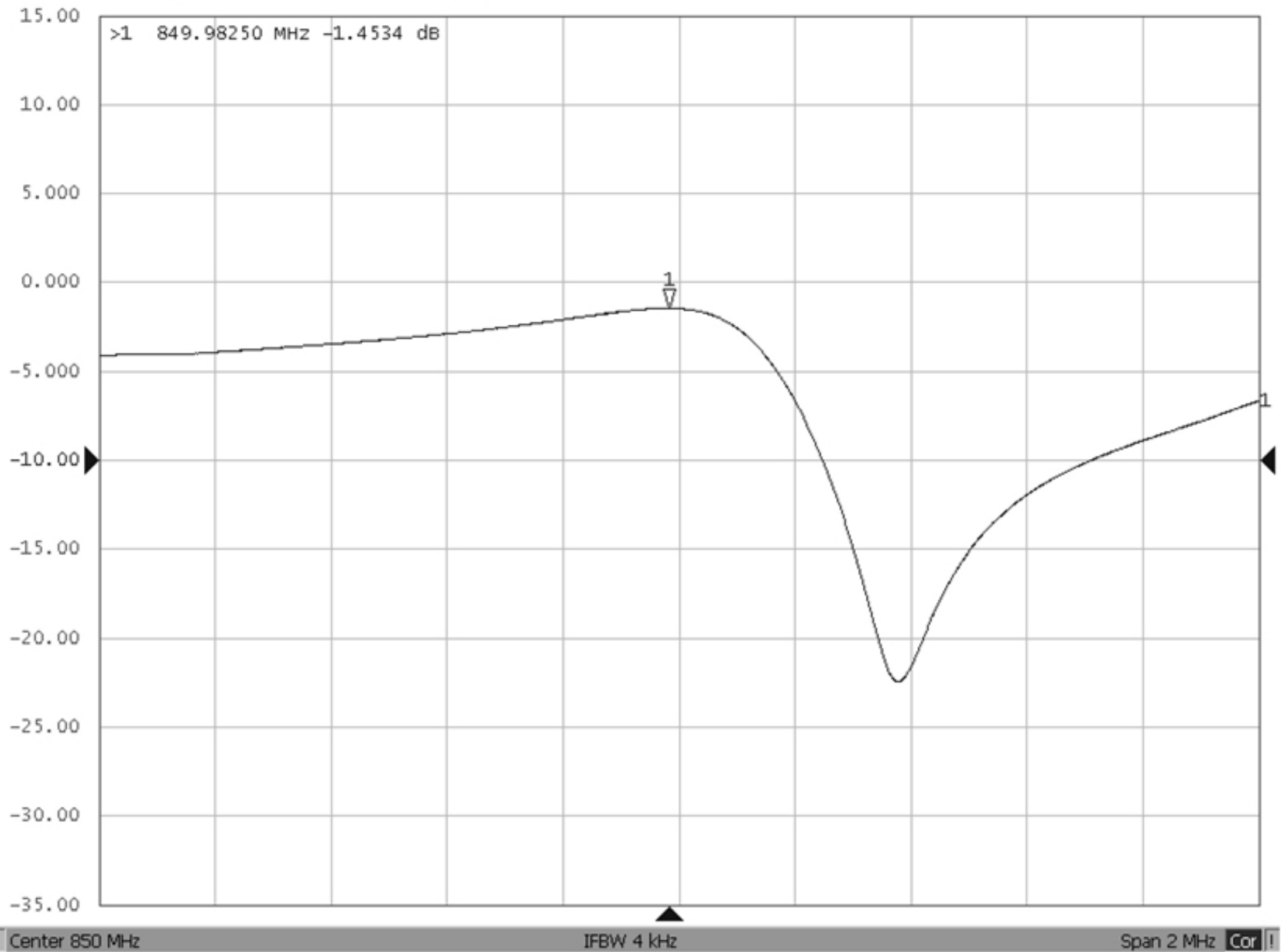
WK01	WK02	WK03	WK04	WK05	WK06	WK07	WK08	WK09	WK10	WK11	WK12	WK13
A	B	C	D	E	F	G	H	I	J	K	L	M
WK14	WK15	WK16	WK17	WK18	WK19	WK20	WK21	WK22	WK23	WK24	WK25	WK26
N	O	P	Q	R	S	T	U	V	W	X	Y	Z
WK27	WK28	WK29	WK30	WK31	WK32	WK33	WK34	WK35	WK36	WK37	WK38	WK39
a	b	c	d	e	f	g	h	i	j	k	l	m
WK40	WK41	WK42	WK43	WK44	WK45	WK46	WK47	WK48	WK49	WK50	WK51	WK52
n	o	p	q	r	s	t	u	v	w	x	y	z

△ Year code :

Year	2014	2015	2016	...	2019	2020
Code	4	5	6	...	9	0

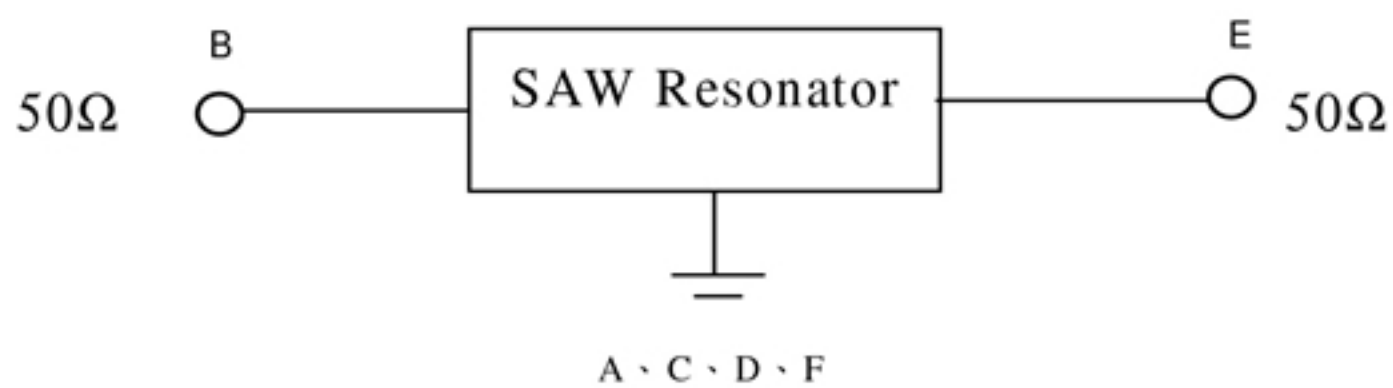
F. FREQUENCY CHARACTERISTICS:

S21 Log Mag 5.000dB/ Ref -10.00dB [RT]

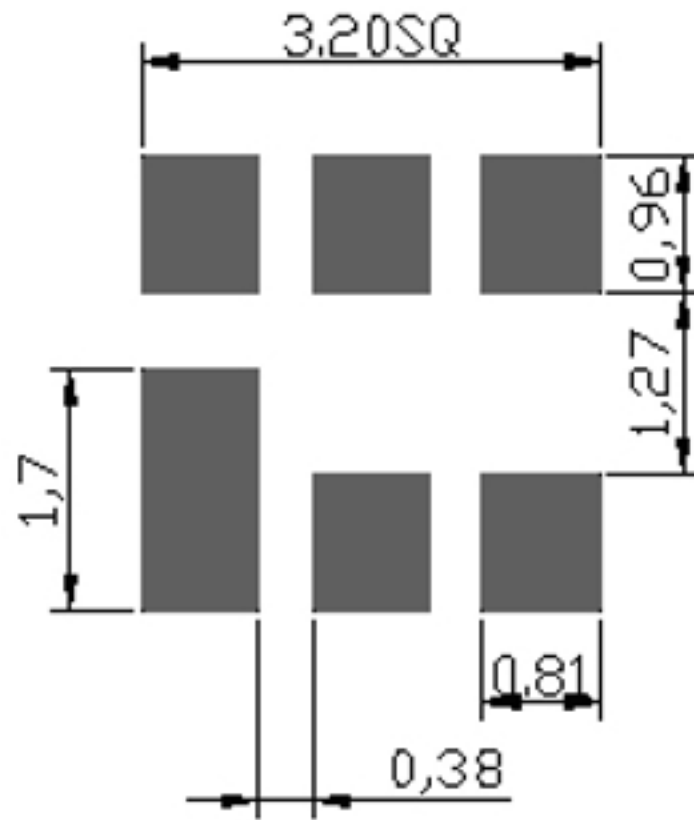


G. TEST CIRCUIT:

Network analyzer



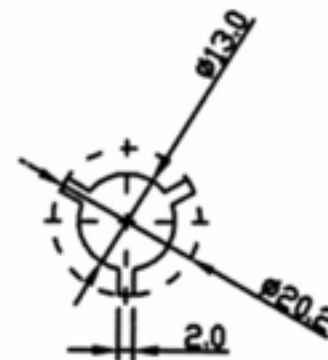
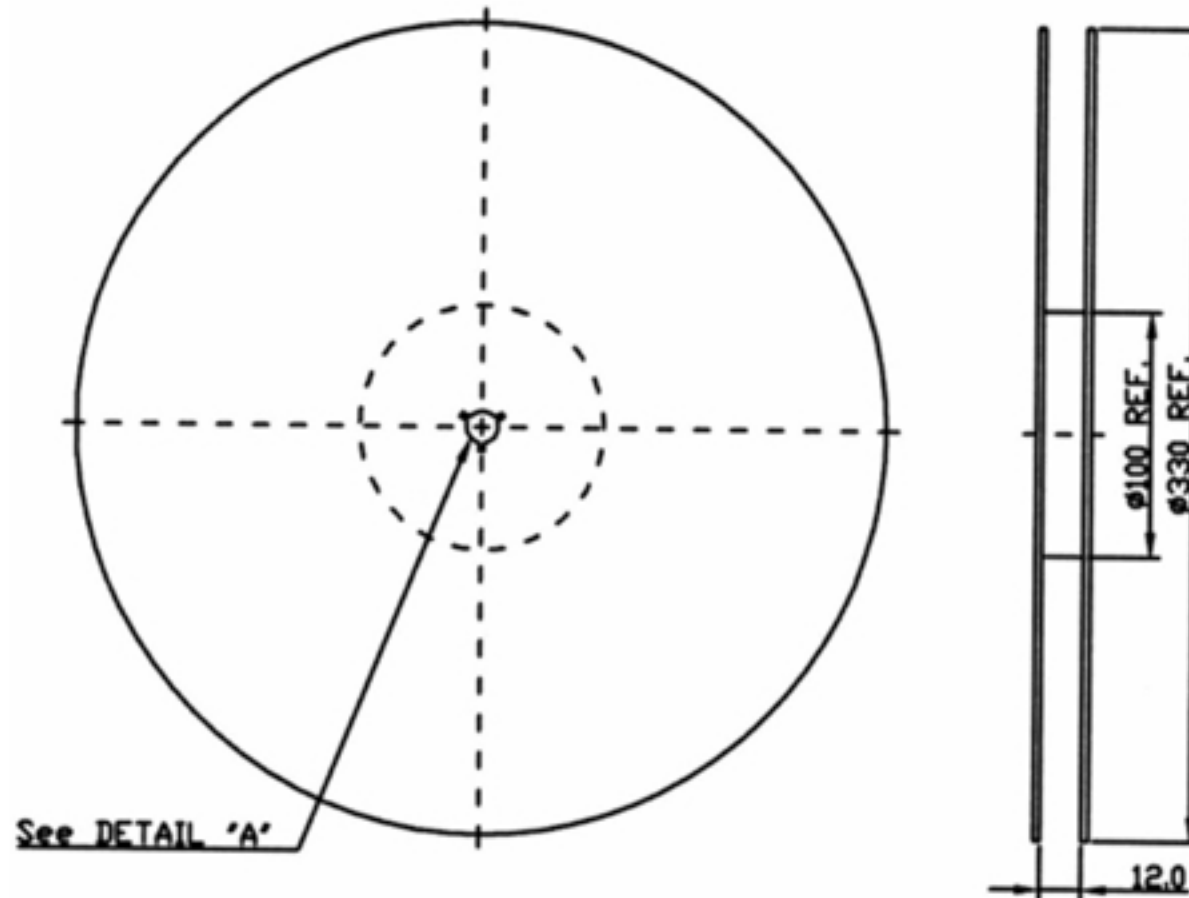
H.PCB FOOTPRINT



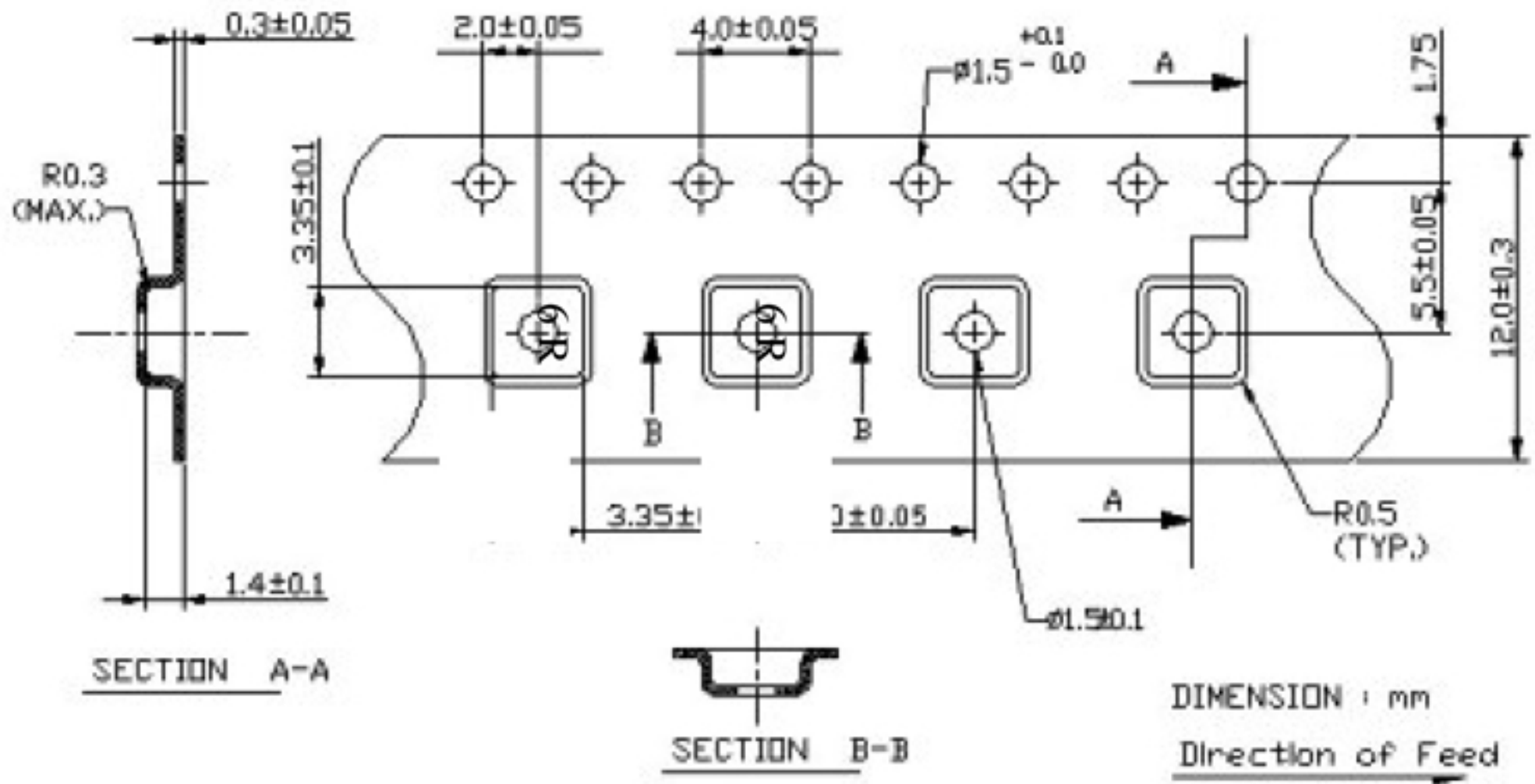
I. PACKING:

1. REEL DIMENSION

(Please refer to FR-75D10 for packing quantity)



2. TAPE DIMENSION



J. REFLOW PROFILE

